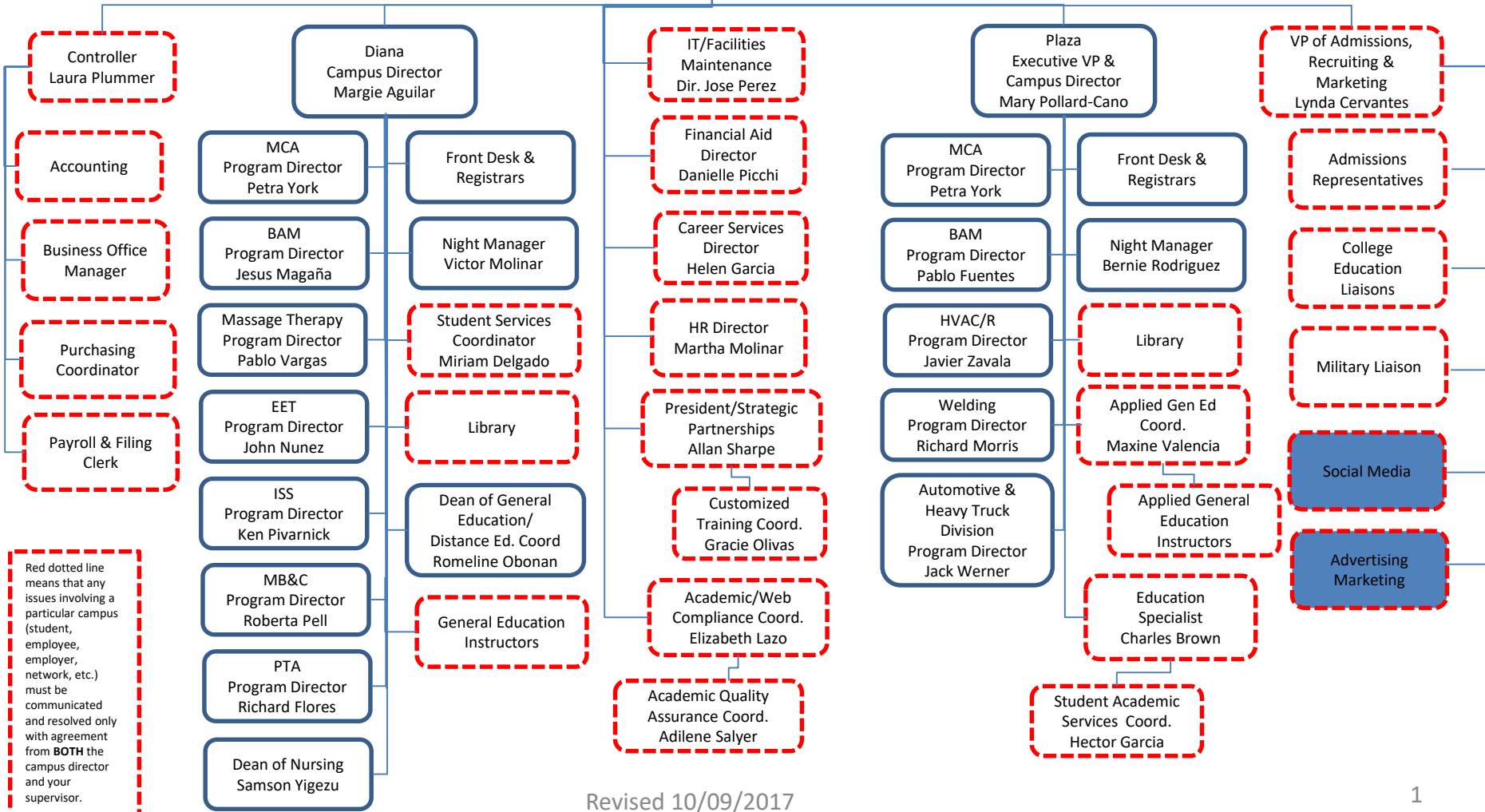
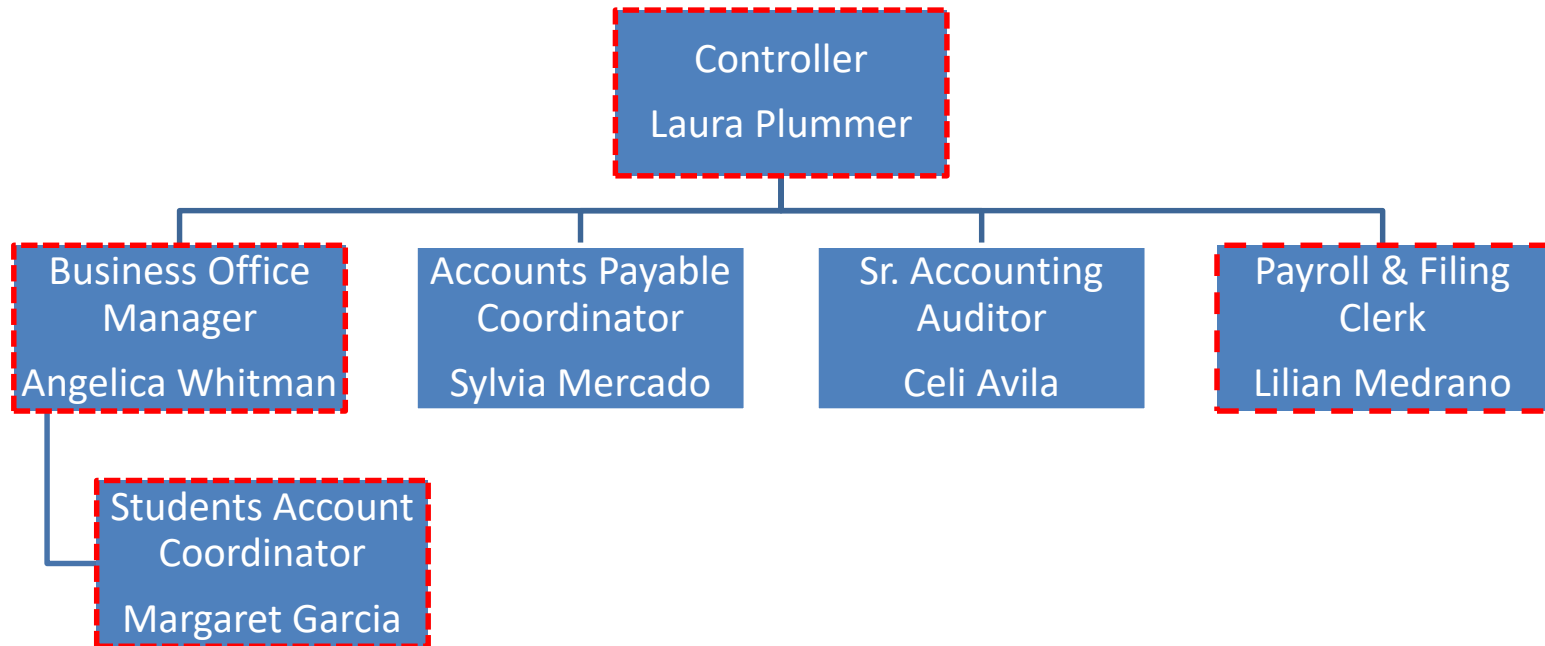


# Organizational Chart



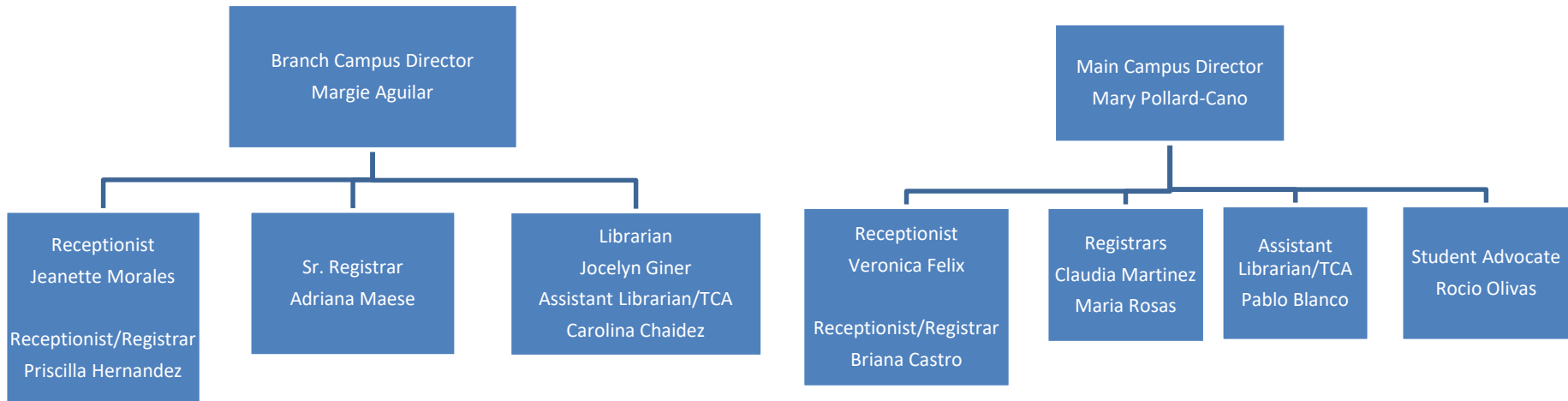
Red dotted line means that any issues involving a particular campus (student, employee, employer, network, etc.) must be communicated and resolved only with agreement from **BOTH** the campus director and your supervisor.

# Accounting

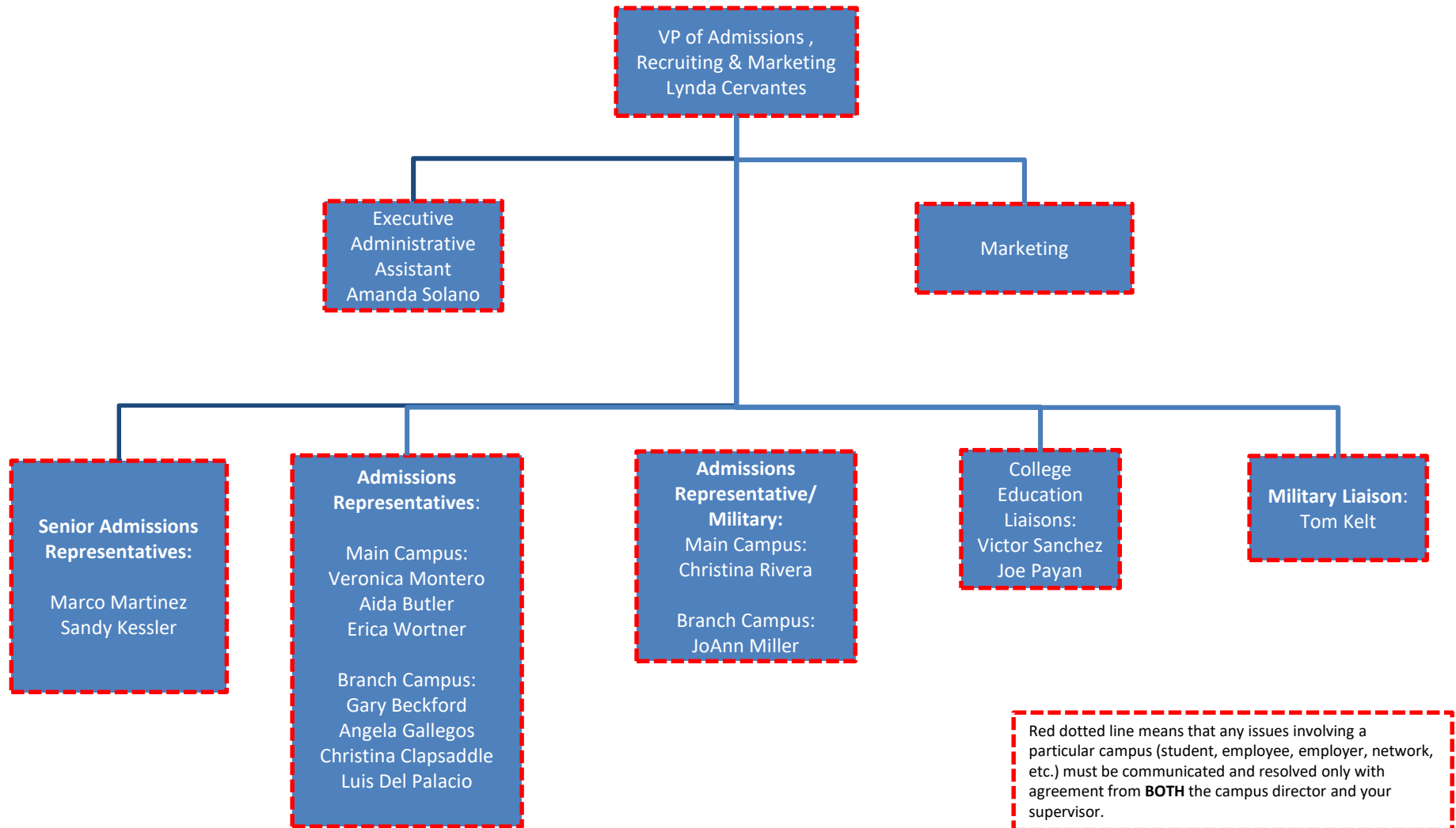


Red dotted line means that any issues involving a particular campus (student, employee, employer, network, etc.) must be communicated and resolved only with agreement from **BOTH** the campus director and your supervisor.

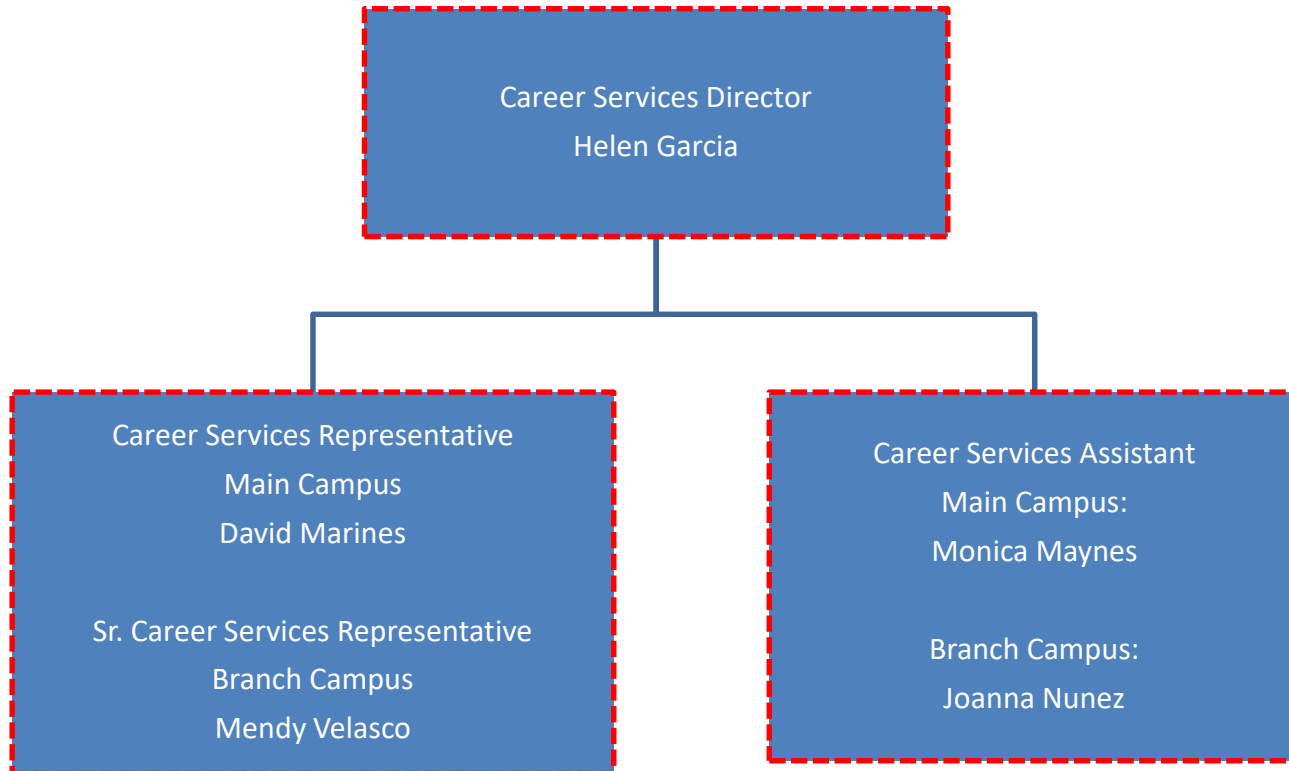
# Administration



# Admissions, Recruiting & Marketing

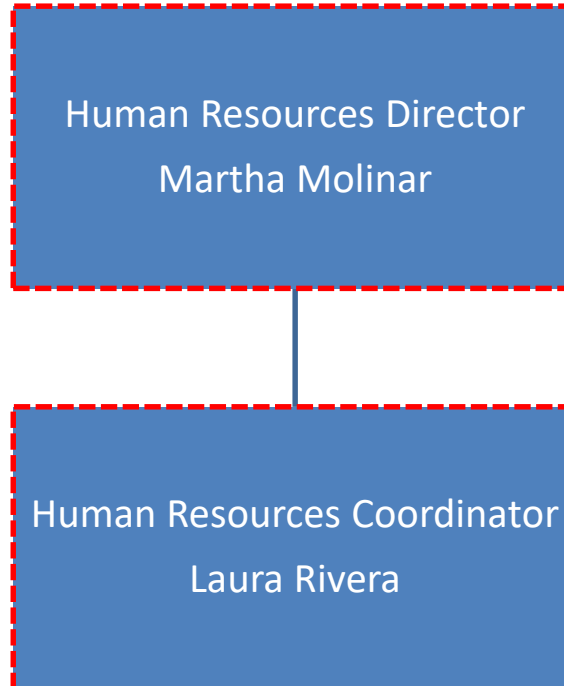


# Career Services



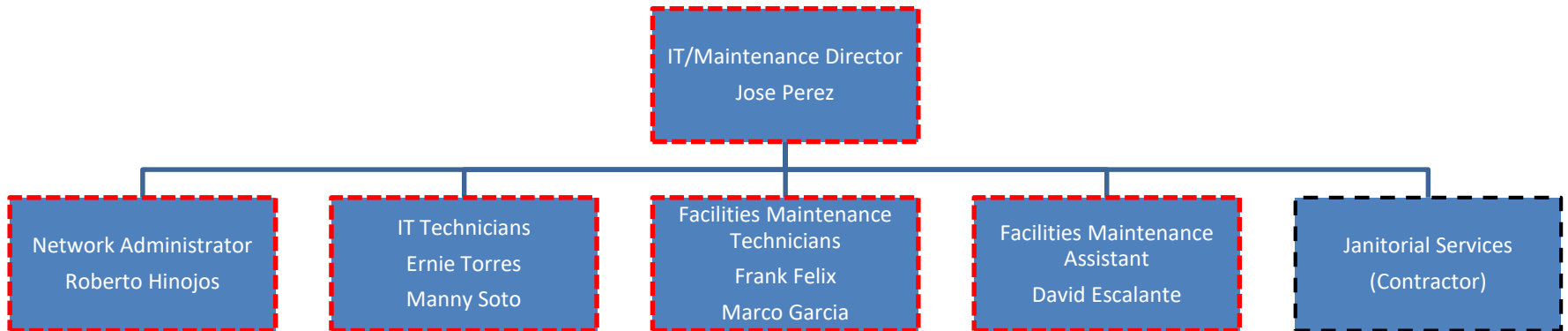
Red dotted line means that any issues involving a particular campus (student, employee, employer, network, etc.) must be communicated and resolved only with agreement from **BOTH** the campus director and your supervisor.

# Human Resources



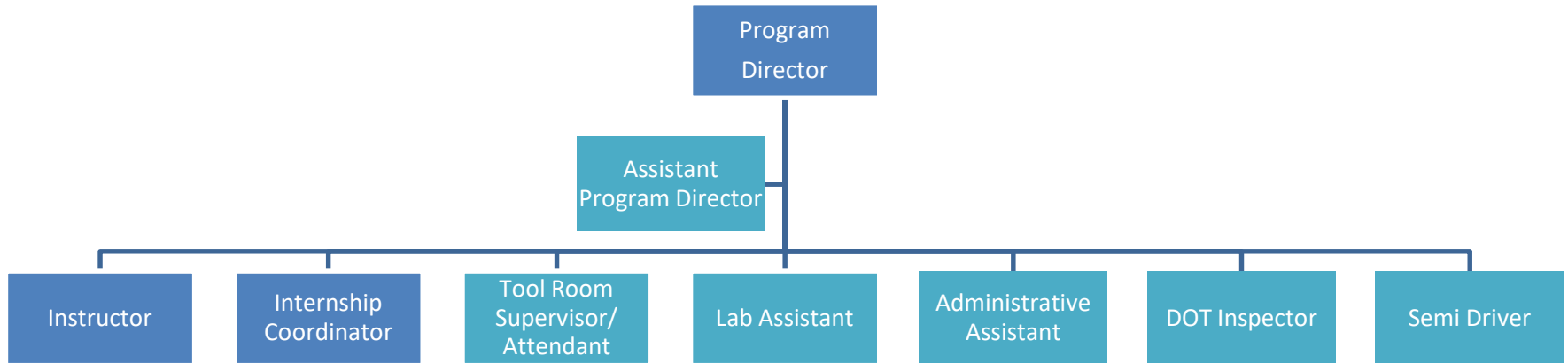
Red dotted line means that any issues involving a particular campus (student, employee, employer, network, etc.) must be communicated and resolved only with agreement from **BOTH** the campus director and your supervisor.

# IT/Maintenance



Red dotted line means that any issues involving a particular campus (student, employee, employer, network, etc.) must be communicated and resolved only with agreement from **BOTH** the campus director and your supervisor.

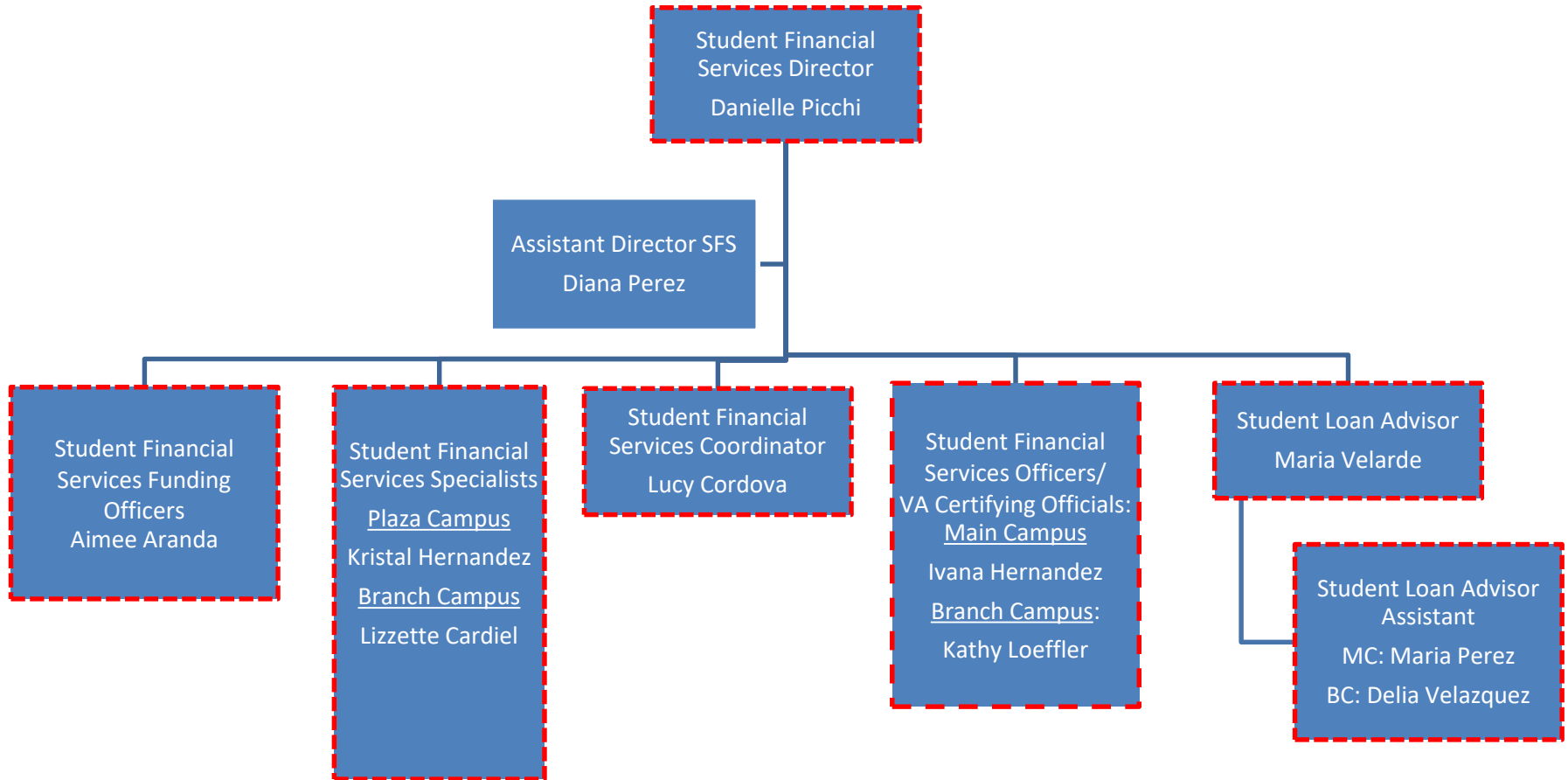
# Programs



For some  
determined  
Programs



# Student Financial Services



Red dotted line means that any issues involving a particular campus (student, employee, employer, network, etc.) must be communicated and resolved only with agreement from **BOTH** the campus director and your supervisor.